

## Forms and Functions

The enhancement of utilitarian objects is an interesting reflection of the society, group or clan in which they were created. The careful selection of material, the precision of execution, and the refinement of the decoration help us to understand their importance and roles in their environments.

A simple wood board will only reach the status of shield when, carved to achieve perfect balance and finely decorated to native standards, it will give strength and pride to its owner.

« Less is more » written by Andrea del Sarto and adapted by Ludwig Mies van der Rohe, sheds light on the major difficulty humans encounter in creating a spoon, a hairpin or a chair that can be recognized as a *chef d'œuvres* !

« Forms and functions », a unique opportunity to grasp the moment when everyday objects become pieces of art through their *beauty*.

To Kaimana



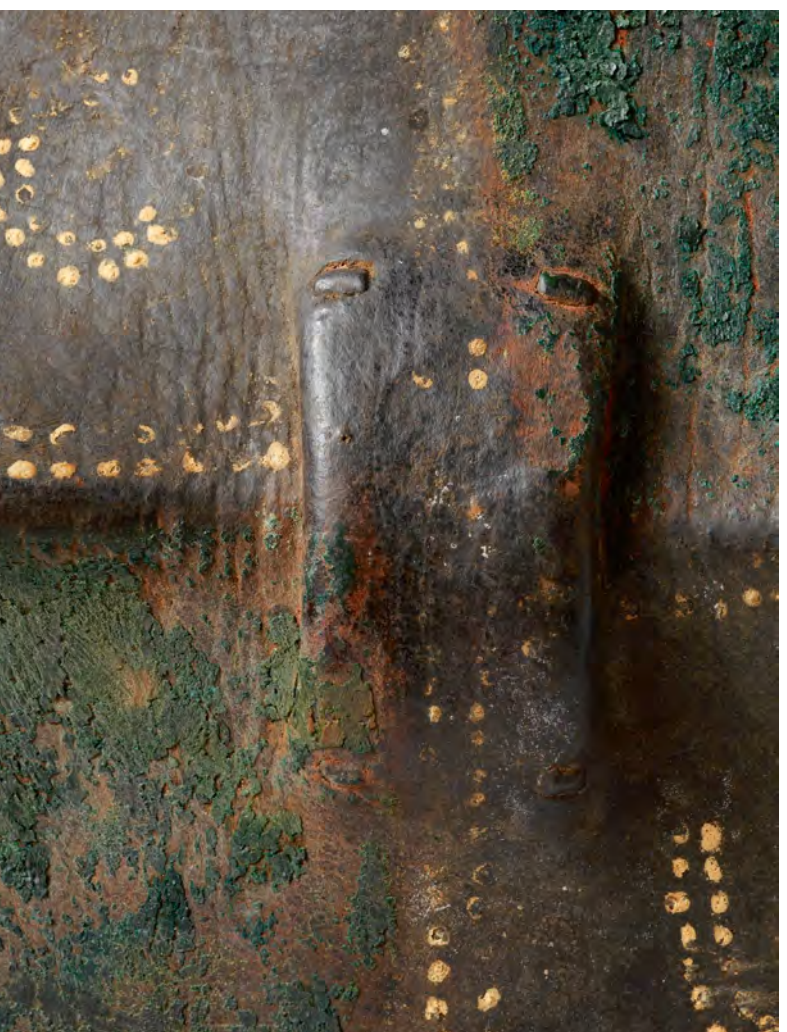


Necklace, *waseisei*, Fiji Islands





Shield, *Sukuma*, Tanzania







Spoon, *Paiwan*, Taiwan





Platter, *Hawaii*, United States







Club, *u'u*, Marquesas Islands







Lipplug, *Kichepo*, Sudan



Helmet, *Jingasa*, Japan





Shield, *Kikuyu*, Kenya







Bowl, *Schouten Island*, Papua New Guinea





Hairpin, *Mangbetu*, Democratic Republic of Congo

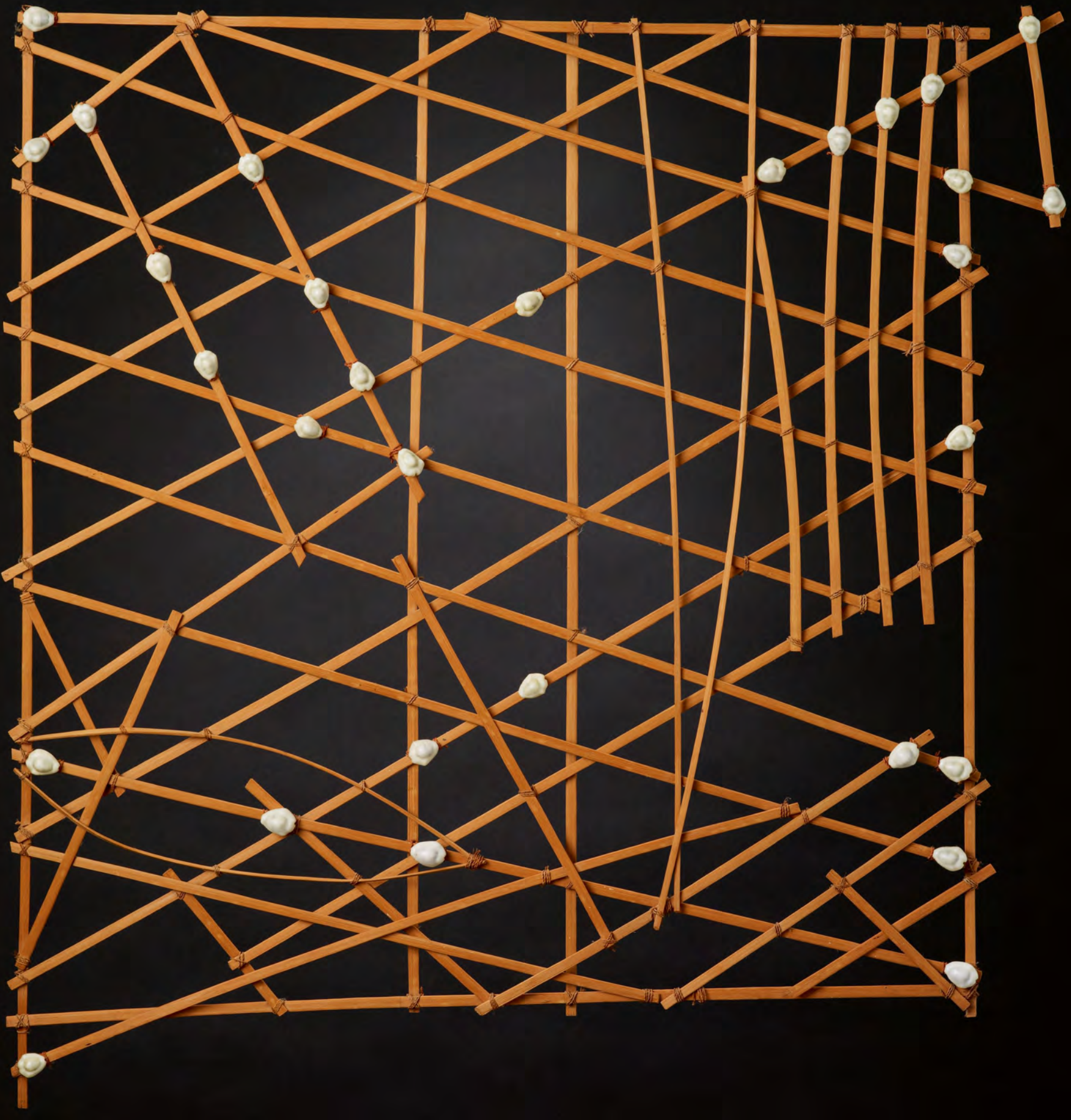






Bell, *Ngbaka*, Democratic Republic of Congo





Navigational map, *Marshall Islands, Micronesia*



Bowl, *Kamakura*, Japan





Harpoon head, *Hudson Bay*, Alaska





Chair, *Ngombe*, Democratic Republic of Congo







Spouted bowl, *Wajima*, Japan





Ladle, *Tlingit*, Northwest Coast







Headrest, *Nuer*, Sudan



Bowl, *usu*, Japan







Shield, *Queensland*, Australia







Pounder, *Kuba*, Democratic Republic of Congo







Comb, *Efate Island*, Vanuatu





Pendant, *Lobi*, Burkina Faso







Shield, *Motu*, New Guinea







Wrist ornament, *poe i'ima*, Marquesas Islands

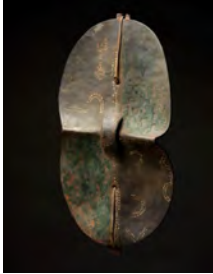




A rare and remarkable chief's split sperm whale *Physeter macrocephalus* tooth necklace made of 28 long tusks delicately fixed on a coconut fiber sennit. Those necklaces were thought to have been made for Fijian chiefs by Tongan canoe craftsmen. L. 35 cm, longest tooth 14,5 cm.

Fiji, 18th century

**Provenance :** Paula and Abe Rosman, New York, USA  
Private collection, Brussels, Belgium



A Sukuma, a typically formed shield called *gula* or *ugula*, with an unusual painted pattern on its surface. L. 69 cm.

*Sukuma*, Tanzania, circa 1880

**Provenance :** Marc & Denise Ginzberg, New York, USA

**Publication :** «Afrique. L'Art des Formes», Ginzberg, 2000, p. 169

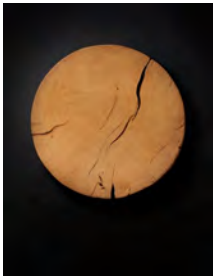
**Exposition :** African shields : Art, Power and Identity, Neuberger Museum of Art, 2002,  
Birmingham Museum of Art, 2004



A very simple and fine *Paiwan* wood spoon carved with elegant geometric rounded lines depicting a stylized human face. H. 15,5 cm

*Paiwan*, Formosa Island, Taiwan, 19th century

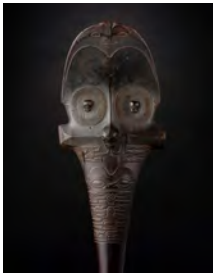
**Provenance :** Irwin Hersey, New York.  
Private Collection, New York



An important wood platter used as container and chopper. H. 64 cm

*Hawaii Islands*, United States, 19th century

**Provenance :** Anchor House Antiques, Honolulu, Hawaii  
Private Collection, Hawaii



An important and rare *casuarina equisetifolia* wood hand club called U'u. An effective weapon in hand-to-hand combat, it also served as a symbol of prestige for chiefs and warriors. L. 138,5 cm

*Marquesas Islands*, 18th century or earlier

**Provenance :** Acquired in London at either Colnaghi or Spinks in the 1920's  
Private collection, USA



A rare and unusual *Kichepo* wood lipplug. L. 14,5 cm

*Kichepo*, Sudan. 19th century

**Provenance :** Angela Fischer, London  
Joel Cooner, Dallas, USA



A fine example of an Edo period lacquered wood helmet called *Jिंगasa*. This type of helmet replaced the *Kabuto* in times of peace and were important elements of status in the society. D. 39 cm

Japan, 19th century



A rare and very elegant *Kikuyu* painted wood shield called *ndome*, in the shape of an oval, pierced in its center, painted, and engraved on both sides with typical geometric designs. Yale University Archives

n° 0123307-01. H. 60 cm

*Kikuyu*, Kenya, 19th century

**Provenance :** William Moore, Los Angeles, ca 1960 - inv. n° 4665/P180



A large and superb wood food bowl nicely carved with two classic ancestors' faces on the inside of the bowl. L. 61 cm

*Schouten Island*, Papua New Guinea, 19th century

**Provenance :** Michael Hamson, Palos Verdes, California



An extremely rare and prestigious *Mangbetu* ivory hairpin. This example, with three flat levels, was dedicated to highly-ranked person. H. 42 cm

*Mangbetu*, Northeast of the Democratic Republic of Congo. 19th century



An important and rare *Ngbaka* wood and iron bell L. 93,5 cm

*Ngbaka*, Democratic Republic of Congo, 19th century

**Provenance :** Walschot collection, Belgium  
Henrion collection, Belgium

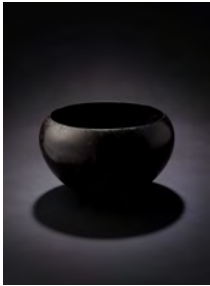


A fine example of a *rebbelith*, a navigational map made of palm leaf midbrids, fiber and cowrie shells, used by the inhabitants of the Marshall Islands. The cowrie shells represent islands and the bent sticks the pattern of waves and marine currents. H. 54 cm

*Marshall Islands*, Micronesia, 19th century

**Provenance :** Private Collection, Paris, France





A very thin and elegant iron alms bowl, H. 14cm and W. 23.5 cm  
Japan, Kamakura period 14th century



A very nice and important ivory harpoon head. L. 42 cm  
*Hudson Bay*, Alaska, USA. 19th century  
**Provenance :** Harry G. Beasley, United Kingdom, collected in 1917



An important and very elegant six foot *Ngombe* royal back chair made in one solid piece of wood covered with brass tacks. Yale University Archives n°0087270~01 H. 64 cm W. 34 cm  
*Ngombe* , Democratic Republic of Congo, 19th century  
**Provenance :** Marc Leo Félix, Brussels  
Berend Hoekstra, Brussels



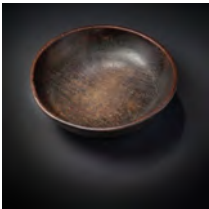
A *Kataguchi*, red lacquered wood sake container from *Wajima* with a fine patina. Red represents joy and celebration in Japan. H. 19,5 cm W. 33 cm  
Japan, 18th century



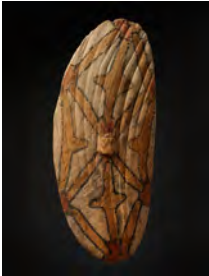
A remarkably carved, fine *Tlingit* wood feast ladle. H. 30,5 cm L. 48,3 cm  
Northwest Coast, British Columbia, Canada, circa 1850  
**Provenance :** Tad Dale, Santa Fe  
Joel Cooner, Dallas  
James Economos, USA



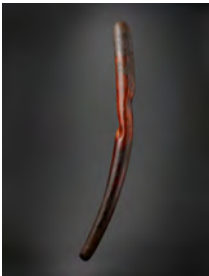
A very rare and beautiful *Nuer* wood headrest. L. 29,3 cm H. 12 cm  
*Malawal*, *Sobat river*, Sudan. Early 20th century  
**Provenance :** Collected by Jean-Baptiste Sevette between 1973 and 1975  
**Publication :** «La tête dans les étoiles», Bruneaf, june 2012, p.109



A large and fine utilitarian bowl of *keyaki* (zelkova) wood. While generally of soft woods, this example is made of the very desirable keyaki hardwood. D. 53 cm  
Japan, 18th century



A rare, pigment painted, wooden shield. The anterior side carved with a central boss, with applied pigment geometric designs in red, black and yellow. L. 90 cm  
*Queensland*, Australia. 19th century  
**Provenance :** Lord McAlpine, United Kingdom  
Private collection, California



A very rare and elegant *Kuba* ivory pounder made of an elephant tusk. It was used by women to pound palm nuts, cereals and tukula, giving the piece its well patinated color. H. 76 cm  
*Kuba*, Democratic Republic of Congo, 18th century or earlier



A very fine and elegant wood comb, L. 36,5 cm  
*Efate Island*, Vanuatu, 19th century  
**Provenance :** René Rasmussen  
Morris Pinto  
Alain de Monbrison  
Mark Blackburn



A rare and important *Lobi* ivory pendant called *taari kome*, of typical form and impressive dimensions, nicely proportioned, and pierced for suspension at the top. L. 23 cm  
*Lobi*, Burkina Faso, 18th century or earlier  
**Provenance :** Peter Loebarth, field collected prior to 1980  
**Publication :** “The Lobi Collection Peter Loebarth”, Katsourous, 2007, ill. 479



A rare and very elegant *Motu* wood and rattan shield. H. 81 cm  
Province of the Centre. Papua New Guinea, 19th century  
**Provenance :** Malcom Davidson Collection, Melbournes  
**Publication :** “Oceanic Shields”, Conru, 2006, ill. 3



A rare human hair wrist ornament, *poe i'ima*, the wavy human hair bound into bunches by twisted fibre. L. 12,5 cm.  
Marquesas Islands. 18th century  
**Provenance :** James Hooper collection, Arundel  
**Publication :** «The James Hooper Collection», Phelps, 1976, p. 99



# COLOPHON

Photography :

Paul Louis, Brussels

Concept and Graphic Production :

Sophie Lorent, Brussels

Paul Louis, Brussels

Ondine Wolfcarius, Brussels

Printed and bound in June 2014 in Couillet by Crousse Graphic

Dépôt Légal:

Bibliothèque royale de Belgique

D/2014/6 Mestdagh Patrick, éditeur



PATRICK & ONDINE  
MESTDAGH

29, rue des Minimes  
1000 Brussels, Belgium  
[www.patrickmestdagh.be](http://www.patrickmestdagh.be)