

to Yvette, Françoise and Henry

Hei tiki, ornamental pendant,
New Zealand

18th century
Nephrite
H. 9 cm

Provenance:

- Robert Hales, London, UK
- Sotheby's NY, November 22, 1998, lot 157
- Thomas Shenk of Ellicott, Maryland
- Mark Blackburn, Honolulu, USA

Cf.: Skinner, p. 17



Bovai, Pole club, Tonga Islands

19th century
Wood, sperm whale ivory (*physter catodon*)
L. 86,3 cm

Provenance:

- James T. Hooper, Arundel, UK
- Christie's London, June 17, 1980, lot 93
- Collection Rosenthal, New York, USA

Publication:

- «*Art and Artefacts of the Pacific, Africa and the Americas : The James Hooper Collection*», Arundel, 1976, p. 164 - 170, pl. 92, ill. 712

Cf. : Phelps, 1976, p. 170, ill. 712



No'oanga, chief's stool, Atiu,
Cook Islands

18th century
Tamanu wood (*callophyllum inophyllum*)
W. 44 cm

Provenance:

- Thomas George Gammon, Petersfield,
Hampshire, England, probably before 1893
- Acquired from the previous owner during
an auction in Petersfield within a group of
drawing instruments

Cf. : Phelps, 1976, p.137, ill. 579



Malo, tapa, Samoa Islands

19th century
Bark cloth, *broussoneti papyrifera*
L. 335 cm

Provenance:

- Colette & Jean-Pierre Ghysels, Belgium

cf. : Meyer 1998, ill. 24, p. +32



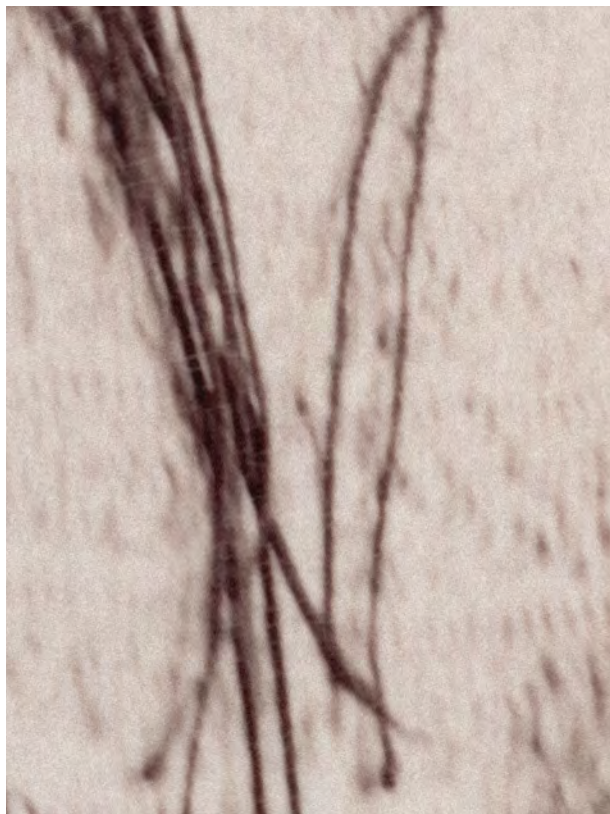
Patu paraoa, hand club,
New Zealand

18th century or earlier
Whalebone (*physter catodon*)
L. 41 cm

Provenance:

- Terrance «Zak» Saklofsky, USA

Cf. : Kaepler, 1978, p. 190, fig. 373



Umeke là'au pākākā, food bowl,
Hawai'i Islands

18th century
Koa wood (*acacia koa*)
D. 34,9 cm

Provenance:

- Collected by Captain James Cook, on his Third Voyage, 1778-79
- The Leverian Museum, sold by lottery 1805
- J. Parkinson, sold by auction in 1806
- John Rowe
- Richard Hall Clarke, Bridwell House, Uffculme
- A.L. Snow
- Sotheby's NY, November 16, 2001, lot 248

Cf. : Buck, 1957, p. 40



Tao, spear, Rurutu island,
Austral Islands

18th century
Koa wood, vegetal fiber
(*casuarina equisetifolia*)
L. 306 cm

Provenance:

- Sotheby's London, June 24, 1992
- Private Collection, USA

Cf.: Kaeppler, 2010, p. 316, fig. 382



Waseisei, necklace, Fiji Islands

18th century

Sperm whale ivory (*Physeter macrocephalus*),
coconut fiber sennit

L. 35 cm, longest tooth 14,5 cm

Provenance:

- Paula and Abe Rosman, New York, USA
- Private collection, Brussels, Belgium

Cf. : Kaeppler, 2010, p. 213, fig. 11



Patu onewa, hand club,
New Zealand

18th century
Basalt
L. 36 cm

Provenance:

- Mr. Norrie Abbott and family, USA

This patu was discovered under Mr. Abbott's grandfather's house in Hereford England in 1884 and has been in possession of the family ever since.

Cf. : Kaeppler, 2010, p. 348, fig. 491



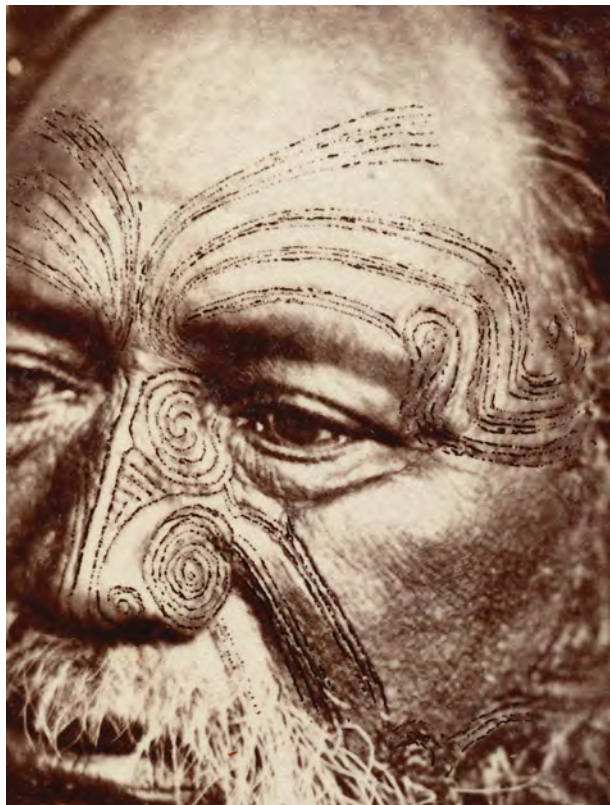
Hoeroa, long hand club,
New Zealand

18th century
Whalebone (*physter catodon*)
L. 126,5 cm

Provenance:

- Geneviève de Brabant, Brussels,
circa 1960 – 1970
- Collection Carlo de Porterre, Belgium
- Millon et Associés auction, Paris, France,
November 2004
- Private Collection, France

Cf. : Phelps, 1976, p. 60, plate 28, n° 264



Ulufuamiti, two hands club,
Niue Island

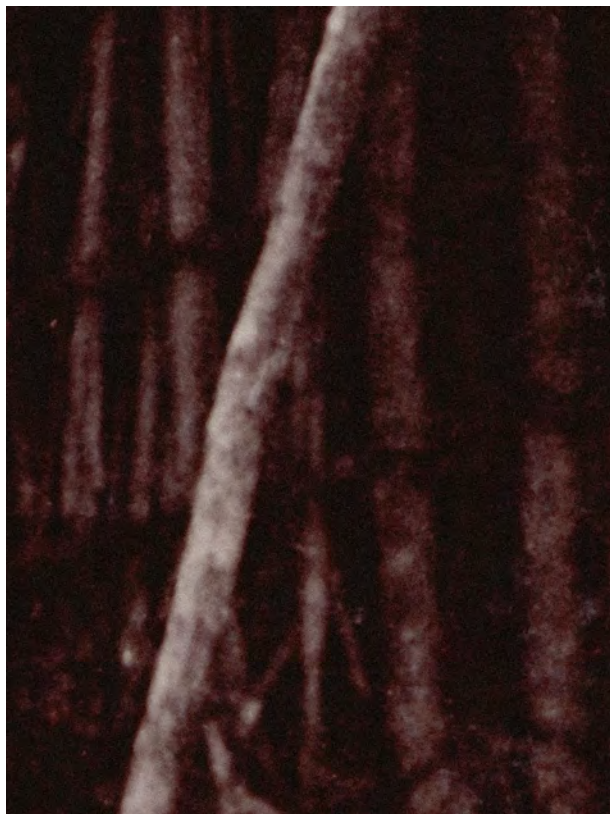
19th century
Wood
L. 140 cm

Provenance:

- Private Collection, UK, circa 1960 – 1970
- Bonhams London, April 26, 2007, lot 519
- Private collection, Belgium

Cf. :

- Edge-Partington, 1996, series I, pl. 63, ill. 2
- Churchill, 1917, plate VIII, ill. f



Pendant, Tonga Islands

18th century
Whale ivory
L. 6 cm



Rapa, dance paddle, Easter Island

18th century

Toromiro wood (*Sophora toromiro*)

H. : 68,5 cm

Provenance:

- Collection Sir Jacob Epstein
- Collection Jean Willy Mestach, Brussels
- Collection Yves-Bernard Debie, Brussels

Publication:

- «*Primitivism in the 20th century Art : Affinity of the Tribal and the Modern*», Moma, NY, 1984, p. 202

- «*The Intelligence of Forms, An Artist Collects African Art*» The Minneapolis Institute of Arts, Minnesota, 1991, p. 93

Cf. : Rubin, 1984, p. 202



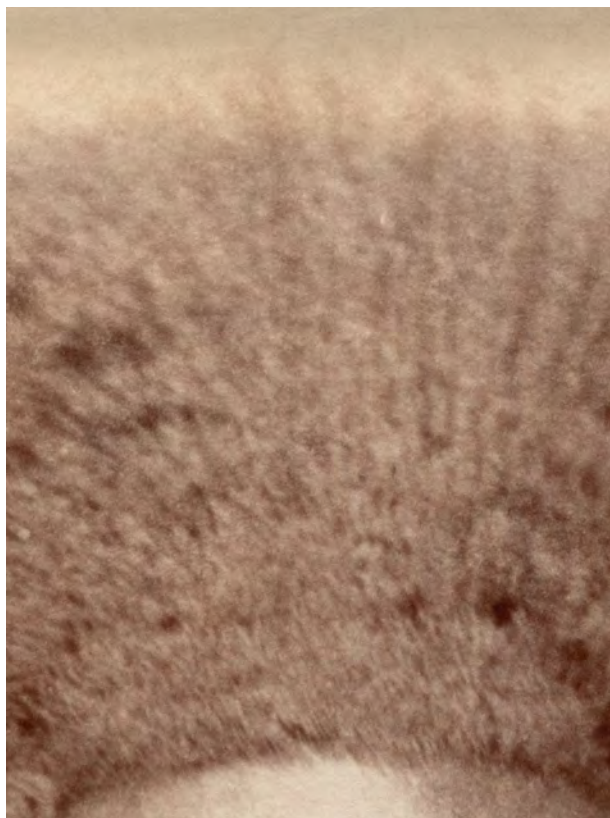
Lei niho palaoa, necklace,
Hawai'i Islands

Early 19th century
Whale ivory, fiber and human hair
L. 30 cm the necklace, 10 cm the hook

Provenance:

- Norman Hurst, Cambridge, USA
- Colette & Jean-Pierre Ghysels, Belgium
- Collection of the Grand Duchess of Luxembourg

cf. Kaeppler, 2010, p. 371 fig. 550



i Ula vutu, throwing hand club,
Fiji Islands

18th century
Nokonoko wood (*casuarina equisetifolia*)
L. 42 cm

Provenance:

- Robert Hales Collection, Guernsey, UK
- Christie's Paris, June 11, 2007, lot 256
- Private Collection, Brussels

Cf. : Clunie, 1977, p. 59



Pearl, Fiji Islands

18th century
Whale ivory
L. 4,5 cm

Provenance:

- Ron Nasser, New York, USA

Cf. : Oldman, 2004, pl. 21, n° 480



Patu pounamu, hand club,
New Zealand

18th century or earlier
Nephrite
L. 29,5 cm

Provenance:

- David Petty, England

Cf. : Meyer, 1988, ill. 32, p. 34



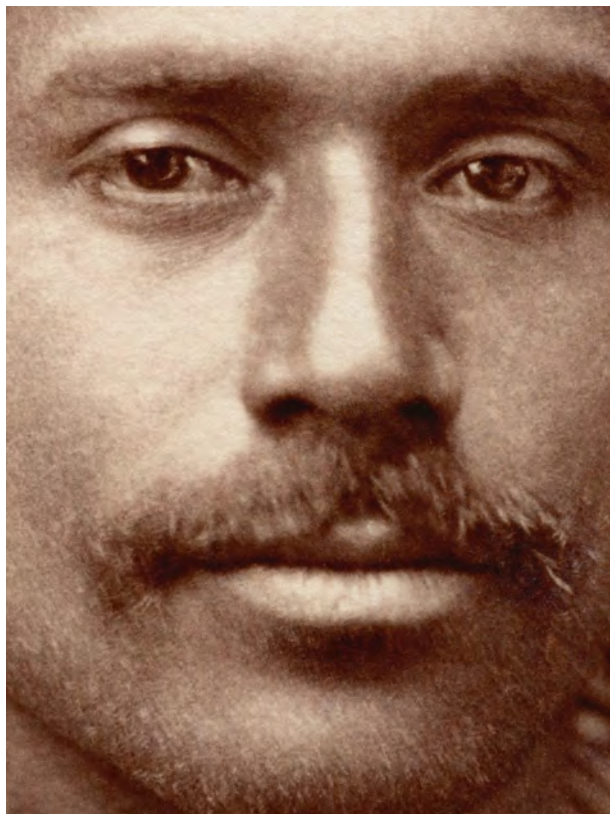
Kali dabala, neckrest,
Tonga Islands

18th century
Wood, coconut, fiber sennit
L. 46 cm

Provenance:

- Kevin Conru, UK
- Collection Berend Hoekstra, Brussels
- Collection Costas Simeonidis, Paris

Cf. Meyer, 2004, p. 88, ill. 59



Kupe`e palaoa, wrist ornament,
Hawai`i Islands

18th century
Whale ivory
L. 6,2 cm

Cf. : Buck, 1957, p. 551, fig. 339



Toko, Tapuva'e, stilt step,
Marquesas Islands

18th century
Wood
H. 16 cm

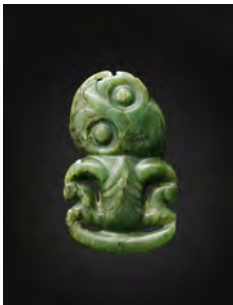
Provenance:

- Collection Bertrand & Bernard Bottet,
Nice, inv. n° 17

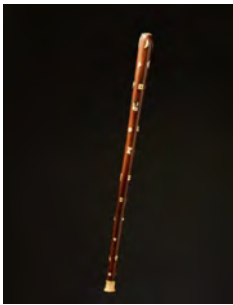
Cf. : Force, p. 117, fig. 272800



CATALOGUE



A fine *maori Hei tiki* pectoral pendant worn around the neck, crafted out of the treasured South Island jade of *pounamu*, with large eyes on tilted head and both hands poised on the thigh.
New Zealand, 18th century



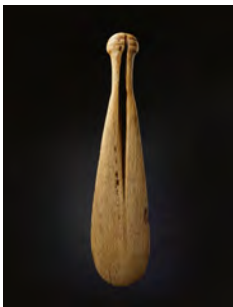
A fine and rare *bovai* pole club of cylindrical form, with forty sperm whale (*physeter catodon*) tooth inlays, including representations of a star, a dog, and birds, each secured by a central brass peg, and a sperm whale (*physeter catodon*) tip.
Tonga Islands, early 19th century



A remarkably carved from a single block of Tamanu wood chief's stool. Symbol of chiefly status, they were used by persons of the highest ranks and had a ritual rather than utilitarian function. This particular one presents excellent proportions and great patina of use.
Cook Islands, 18th century



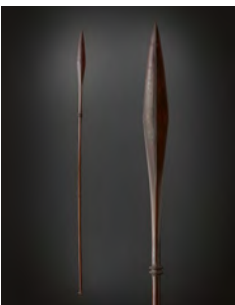
A rare and long *malo*, a loincloth that wraps around the hips and is made of strips of pounded bark from the *Broussonetia*, vegetable dye.
Samoa Islands, Second part of the 19th century



An important *maori* whalebone hand club *patu paraoa*, of spatulate form, the pierced rounded butt lug with four carved shallow ridges. Used in close combat, they were also worn on the belt as ornament. New Zealand, 18th century



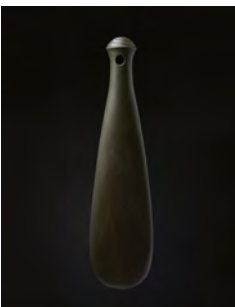
A very fine and rare large bowl of *koa* wood, of hollowed circular form presenting a number of old native peg repairs in the shape of a butterfly. Dishes of this type were used for eating and storage.
Koa was the preferred wood for bowls, which were cut from the solid, soaked in sea water and filled with waste taro or sweet potato to draw the bitterness from wood.
Hawai'i Islands, 18th century



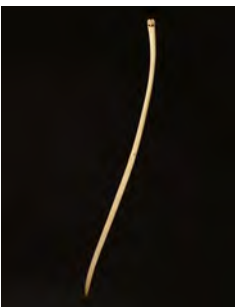
A very fine and elongated spear used as a weapon presenting a flat blade and a delicate raised mid-line, a double collar engraved with chevron motifs and protected at the butt with applied vegetable fiber.
Probably from Rurutu Island, Austral Islands, 18th century



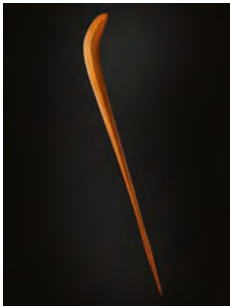
A rare and remarkable chief's split sperm whale tooth necklace of 28 long points delicately fixed on a coconut fiber sennit. Those necklaces were thought to have been made for Fijian chiefs by Tongan canoe craftsmen.
Fiji Islands, early 19th century



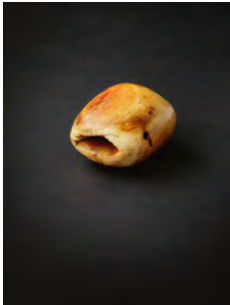
A fine *maori* basalt stone hand club *patu onewa* of elegant proportions, the carinated tip beneath the grip pierced for a wrist thong, and flaring gracefully to a rounded edge; fine, slightly glossy dark green surface.
New Zealand, 18th century



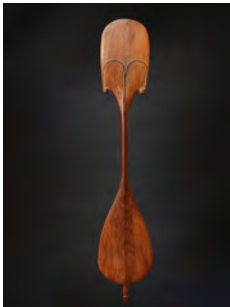
An extremely rare whalebone *maori* weapon *hoeroa*, generally made from the lower jaw of a sperm whale. These long clubs appear to have been used mainly as personal *mana* or chief authority by high-ranking men.
New Zealand, 18th century



A rare and unusual wood club.
Niue Island, 19th century



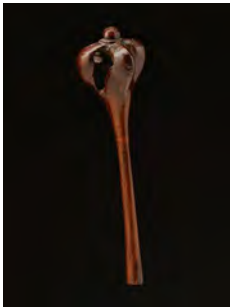
A whale ivory pendant, probably an element from a necklace. The very nice patina and the use on the attaching holes gives a good idea of the age of it.
Tonga Islands, 18th century



An extremely rare and important dance paddle *Rapa* in *Toromiro* wood. It represents a human body, a face in the upper part and a phallus at the bottom.
Easter Islands, 18th century



A very important and beautiful necklace composed by a braids of human hair and a sculpted sperm whale tooth. Considered as the most spectacular of all Hawaiian ornaments, *Lei niho palaoa* served as visual symbols of status and rank.
Hawai'i Islands, early 19th century



A *i ula vutu*, throwing wood club, the head with 4 points, representing the *vutu* fruit from the *barringtonia* tree. This is one of the rarest model.
Fiji islands. 18th century



A whale ivory spherical pendant, probably an element from a necklace showing a very nice patina.
Fiji Islands, 18th century



A very old and beautiful *maori* hand club named *patu pounamu*, The jade, or nephrite handle pierced for attachment of a wrist band, the flat blade flaring to a rounded tip.
New Zealand, 18th century or earlier



An exceptional neckrest called *Kali dabala* made of hard wood and coconut fibers showing a beautiful and old patina of use. The long curved cross-piece with tapered legs on square feet present a particularly refined composition.
Tonga Islands, 18th century



A very rare whale ivory wrist ornament *kupe'e palaoa*, the domed oval ivory pierced two times at the back.
Hawai'i Islands, 18th century



A very beautiful of classical style wood stilt step of unusual size presenting a wonderful patina of use. This particular size makes us believe it might be from a pair for a young boy or a child. The sport of stilt walking was very popular and frequently practiced. Marquesas Islands, 18th century

COLOPHON

Thanks to :

Marge Levin
Monique Chicot
Michael Evans

Photography :

Paul Louis, Brussels

Concept and Graphic Production :

Sophie Lorent, Brussels

Printed and bound in June 2013 in Couillet by Crousse Graphic

Dépôt Légal:
Bibliothèque royale de Belgique
D/2013/6 Mestdagh Patrick, éditeur

BIBLIOGRAPHY

BUCK P., or Te Rangi Hiroa, «*Arts and Crafts of Hawaii*», Honolulu, 1957

CHURCHILL W., «*Club types of nuclear Polynesia*», Washington, 1917

CLUNIE F., “*Fijian Weapons eʻ Warfare*”, Suva, 1977

EDGE-PARTINGTON J., “*Ethnographical album of the Pacific Islands*”, Hong Kong, 1996

FORCE, R. & M., “*The Fuller Collection of Pacific Artifacts*”, London, 1971

KAEPPLER A. L., «*Artificial Curiosities - An exposition of Native Manufactures Collected on the Thre Pacific Voyages of Captain James Cook, R.N.*», Honolulu, 1978

KAEPPLER A. L., «*Polynesia. The Mark eʻ Carolyn Blackburn Collection of Polynesian Art*», Honolulu, 2010

MEYER A. JP., «*Océanie*», Paris, 1988

MEYER A. JP., «*Tapa - Etoffe dʻécorce dʻOcéanie - Bark cloth of Oceania*», Paris, 1998

MEYER A. JP., «*Oceanic headrests - Appuie-nuque océaniens*», Paris, 2004

OLDMAN W.O., “*The Oldman Collection of Polynesian Artifacts*”, Auckland, 2004

PHELPS S., «*Art and Artefacts of the Pacific, Africa and the Americas : The James Hooper Collection*», Arundel, 1976

RUBIN W., “*Primitivism*» in the 20th century. *Affinity of the Tribal and the Modern*”, New York, 1984

SKINNER H. D., «*The Maori Hei-Tiki*», Dunedin, 1966

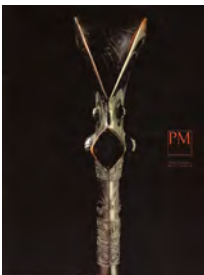
PUBLICATIONS



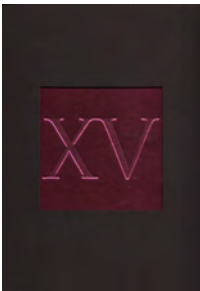
Armes Anciennes
1998



Couteaux de jet ou la collection d'un peintre
June 2003



Patrick & Ondine MESTDAGH
June 2004



XV
June 2010



Boucliers
November 2012



Matière
January 2013



PATRICK & ONDINE
MESTDAGH

29, rue des Minimes
1000 Bruxelles